

# bimstore.co.uk

Kawneer UK Limited  
AA720 Doors  
User Guide

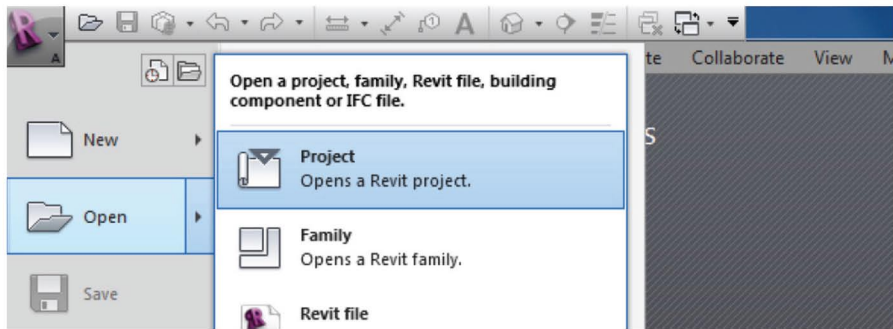
Version 1.0    Revit 2013  
July 2014

 **KAWNEER**  
AN ALCOA COMPANY

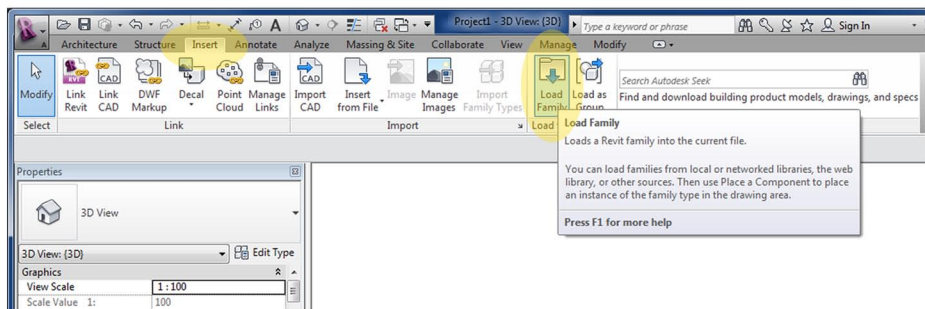
## Loading the family components into your project

The AA720 door components are designed for use within curtain walls and have been created using a 'Door - Curtain Wall' Template, meaning they cannot be loaded as a typical Revit door family. You can add the family into your project using the following method:

1. Open the Revit file containing your 'project', and navigate to a an appropriate view.



2. Now save the component that you downloaded from bimstore to your desired location on your computer (In line with your company protocols).
3. To load the component into the project, go to 'Insert Tab/Load Family/Select the component from your saved location' as shown below:



4. The Family is now copied & embedded into your project and can be selected from the 'Project Browser / Families / Door' selector within your project BIM. (You can delete the item you added to your 'Revit Model' and the Family will remain within your Project Browser.)

## Placing the AA720 Doors in Curtain Wall

In order to place the AA720 door, a curtain wall system must first be created. Once the Kawneer curtain wall is loaded and in place within your project, set up grids and mullions, then select the panel which is to be changed to a door, then using the 'Type Selector' drop down in the 'Properties Box' select the desired door component.

To create a new size, once component is loaded into a project and inserted into curtain wall, simply adjust the curtain wall grid setting out and the door will update automatically.

Always check with Kawneer regarding sizes and data changes.

## Using the AA720 Door components

Kawneer offer a range of options for their doors and these have been built into the components. In order to access these and apply please use the following method:

1. Go to a suitable view and select the component.
2. Once the family is selected, the 'Properties' box will appear on the screen. Under the heading 'Dimensions' are the 'instance parameters' labelled 'Handle Height' and 'Midrail Height' - adjust these dimensions to suit the required setting out then click apply.

Also under the 'Dimensions' heading is the 'instance parameter' labelled 'Position Offset', use this to reposition the door in plan if required.

3. In the 'Properties' box under the heading 'Construction' are instance option tick boxes for several options. 'Has Midrail' - Select this to show a midrail on the doors. Tick / untick the following to choose preferred handles - 'Handle\_Lever Handle Internal', 'Handle\_Lever Handle External', 'Handle\_Panic Bar Type 1 Internal', 'Handle\_Panic Bar Type 2 Internal'. There are 3 options for hinges, 'Hinge Flag', 'Hinge Barrel' and 'Hinge Concealed' (untick flag and barrel and concealed will automatically be selected). Select 'Door Closer' to show the door closer.

'Ironmongery Comments' - this is a text parameter to allow for schedulable comments to be noted regarding the ironmongery specification.

4. Also in the 'Properties' box under the heading 'Materials and Finishes' are the parameters to adjust the colour / materials of the Ironmongery and Door framing. To adjust these colours / materials simply click on desired instance and change via the 'Materials Browser' and click apply.

Under 'Edit Type' of each component can be found the 'Type Properties' including Kawneer contact details.

## Other Notes

You can add the Kawneer AA720 Doors to your company template file, they will then be available without loading when starting a new project.

## Revision

Version 1.0 - First Issue

**bim**store.co.uk

North East  
Spaceworks  
Benton Park Road  
Newcastle Upon Tyne  
NE7 7LX

T: +44 (0)191 223 6600  
F: +44 (0)191 223 6610